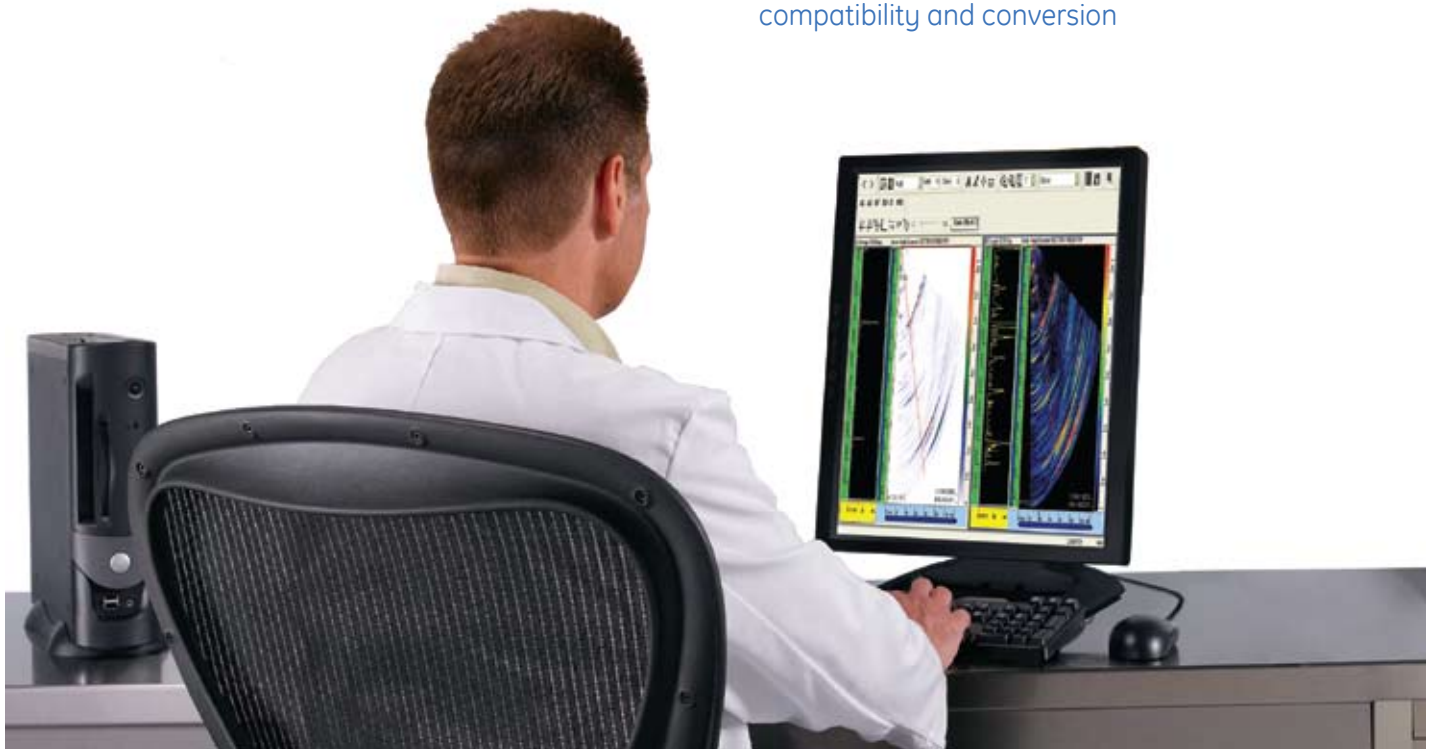


# Rhythm<sup>®</sup> Ultrasonic (UT)

## Inspection data management software

### Features

- Performs the same functions as the Phasor XSTM so you can work offline without sacrificing capability
- Adds a full complement of tools for reporting and analysis for better decision-making
- Create meaningful inspection reports with just a few clicks of a mouse
- Same easy-to-use interface as other Rhythm software to get you up and running quickly
- DICONDE-compliant to ensure universal data compatibility and conversion



# Rhythm Ultrasonic (UT)

Rhythm UT delivers consistency, productivity and improves the workflow surrounding the capture and review of phased array images.

## Easy to Use

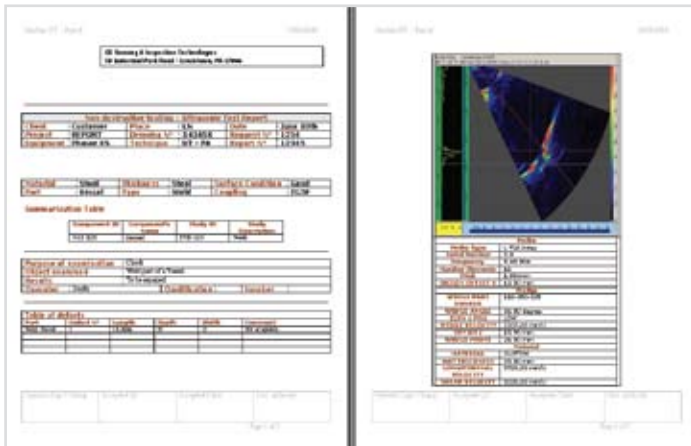
Rhythm UT offers the same advanced viewing and measurement tools as the Phasor XS so you can work offline without sacrificing capabilities. Rhythm UT offers additional tools to enhance reporting and analysis to assist in better decision-making.

Rhythm UT uses the same user-friendly interface found in other Rhythm packages so you can get up and running quickly as possible. Less learning curve means more productivity.

## Reporting

Rhythm UT eliminates the need to manually consolidate different files with stored images from the Phasor XS into a study in order to generate a report. You can easily import CAD drawings or photographic images to assist in inspection site identification in the generated report.

Save time in the reporting process with automatic generation of reports. Images containing analysis information, sector scans and other views can be incorporated so that reports can be used for historical review purposes.



Report generated by Rhythm UT

## Designed for Industry

Designed for high throughput examination, Rhythm UT has been tailored specifically for industrial applications. All data is saved and transferred in the DICONDE (Digital Imaging and Communications in Non-Destructive Evaluation) format that offers operators many advantages:

- No constrictions associated with proprietary formats
- Easy integration with different systems
- Efficient data sharing format
- Avoids legacy data conversion when upgrading inspection systems

## Technical Specifications

Minimum PC configuration for Rhythm UT	
Processor	1200 MHz
Memory	256MB RAM
Hard disk	20GB
Video resolution	1024 X 768
Network card required	128 Kbits/sec
Operating system	Windows® XP
Word Processor	Microsoft® Word® 2003

Note: Review and Archive hardware supplied by GE Sensing & Inspection Technologies

# Rhythm Modules

## Rhythm UT - Phasor XS

Create and use inspection lists to record details, such as item being inspected, defect classification, and unit serial number. Automatically generate inspection reports with a few clicks of the mouse.

## Rhythm Review

Accepts data from Rhythm Acquire, other Rhythm Review workstations, and removable media, such as CDs and DVDs. It provides application tools for analysis, enhancement, measurement, reporting and storage of received data.

## Rhythm Archive

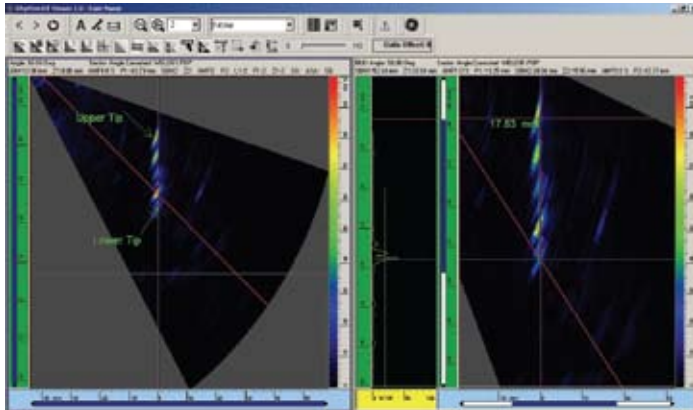
Delivers a complete, scalable and flexible DICONDE storage solution for non-destructive testing images and information. Rhythm EA may be used for robust on-site, multi-site, and off-site implementations.

# Features Overview

This section presents a high level overview of the general features and functionality of the Rhythm UT. This list is general in nature and is not intended to detail every specific feature and functionality of the workstation.

## Powerful Display, Measurement and Analysis Tools

- Sector, linear and c-scan views
- Two sets of crosshair cursor with measurements + beam selector
- Gates and reference lines (legs and origin lines)
- Software gain control
- Interactive windowing
- Zooming
- Smart image rulers
- Import image and use them for reports
- Report generator
- Generate BMP and JPEG images
- DICOMDE generation



Examples of indication analysis in a weld

## Data Selector Features

- View Port with variable magnifier for reviewing related images and making comparisons to a master image or historical data
- Workflow for routing, archiving, and deleting images
- Toolbar and short cut keys providing access to key functions

## Language Support

Rhythm is available in the following languages:

- English
- French
- German
- Spanish
- Italian
- Chinese (Simplified)

## Viewing Section Features

- Create and apply presentation states
- Generate annotations
- Make measurements
- Change color palette
- Optimize image
- Optimize sensitivity with offline gain
- Configurable View Port layout
- Create and display integrated Structured Reports
- Image, series, study and component compare
- Cut/copy/paste annotations



## Regional Contact Information

### North America

50 Industrial Park Road  
Lewistown, PA 17044  
USA

+1866 243 2638 (toll free)  
+1 717 242 0327

### Europe

Robert Bosch Strasse 3  
50354 Huerth  
Germany

+49 2233 6010

### Asia

5F, Hongcao Building  
421 Hongcao Road  
Shanghai 200233  
China

+86 800 820 1876 (toll free)  
+86 21 3414 4620 (ext. 6029)

### Japan

Medie Corp Bldg.8 2-4-14 Kichijoji-honcho,  
Musashino-shi, Tokyo 180-0004  
Japan

+81 422 67 7067  
+81 422 67 7068

### South America

Av. das Nações Unidas, 8501 - 1º andar  
05425-070, São Paulo, SP  
Brazil

+55 11 3067.8166



[www.geinspectiontechnologies.com/en](http://www.geinspectiontechnologies.com/en)

GEIT-20053EN (09/08)